

Inductive Proximity Sensors

Housings to Fit Your Needs

- Cylindrical
- Rectangular
- Flat pack
- Slotted

Various Outputs

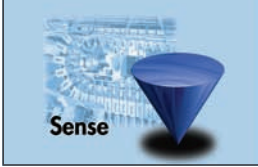
- Transistor
- SCR
- Analog
- MOSFET
- NAMUR

Specialty Types

- High temperature
- Custom housings, cables and connectors



**10 Year
Warranty**



Inductive proximity sensors are employed in applications where fast, maintenance-free, wear-resistant detection of metal objects is required. They detect all ferrous and non-ferrous metals, independent of the shape of the metal and without making physical contact.

- Maintenance-free and wear-resistant
- Bounce-free solid state switching
- No physical contact
- High operating frequencies
- Capable of being installed in any position
- Lifetime is independent of operating frequency
- Not sensitive to vibration or dirt
- Waterproof
- Possibility to replace older mechanical solutions
- Operates at higher speeds than mechanical solutions
- Infinite life span vs. limited life for mechanical solutions



Space Optimization



User Friendly



Long Term Reliability



Cost Saving



Carlo Gavazzi has been producing exceptional proximity sensors for almost a half century. These high quality inductive sensors are rugged and feature EMC ratings which are amongst the highest in the industry. We'll also go to great lengths to customize a sensor for an OEM customer's application. Whether it's a specific cable length, a particular type of sensor material, a specialty cable type and/or custom markings - there is no request too difficult for us to achieve. Furthermore, all Carlo Gavazzi inductive proximity sensors come standard with a **10 year warranty!**



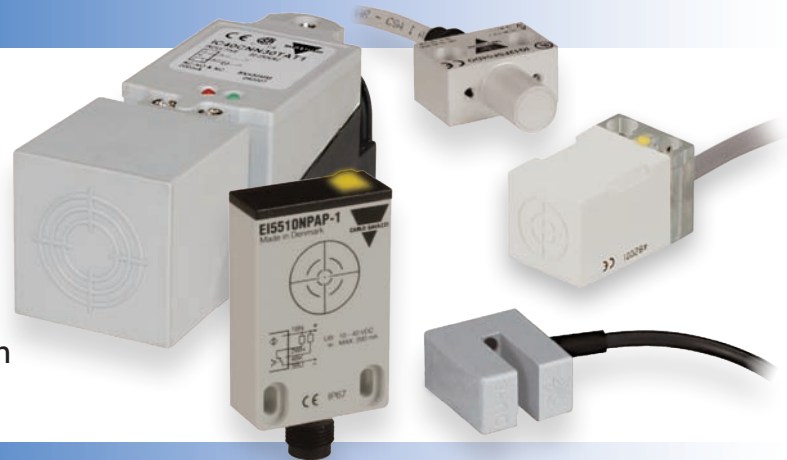
CYLINDRICAL

- M5, Ø6.5, M8, M12, M18 and M30 sizes
- Stainless steel, nickel-plated brass, and plastic housings
- Flush or non-flush types
- 2 or 3 wire DC and 2 wire AC
- Sensing ranges up to 22mm
- Cable or M8/M12 plug connection



RECTANGULAR, FLAT-PACK AND SLOTTED

- Compact sizes
- Direct limit switch housing replacement
- Plastic and metal housings
- Flush or non-flush types
- 2, 3 or 4 wire DC and 2 wire AC
- Sensing ranges up to 30mm
- Cable, M12 plug or terminal connection



ANALOG OUTPUT

- M8, M12, M18 and M30 sizes
- Nickel-plated brass housings
- Flush or non-flush types
- 3 wire DC
- Sensing ranges up to 11 mm
- Current outputs:
 - » 0-20, 0.6-15.5 or 20-4 mA
- Voltage outputs:
 - » 0.5-10, 1-10, 0-1.6 or 0-10 VDC
- Cable or M12 plug connection



HIGH TEMPERATURE

- M5, M8, M12, M18 and M30 sizes
- Stainless steel and nickel-plated brass housings
- Flush or non-flush types
- 3 wire DC and NAMUR types
- Sensing ranges up to 15 mm
- Operating temperatures up to 248°F (120°C)
- Cable or M12 plug connection



Output Types

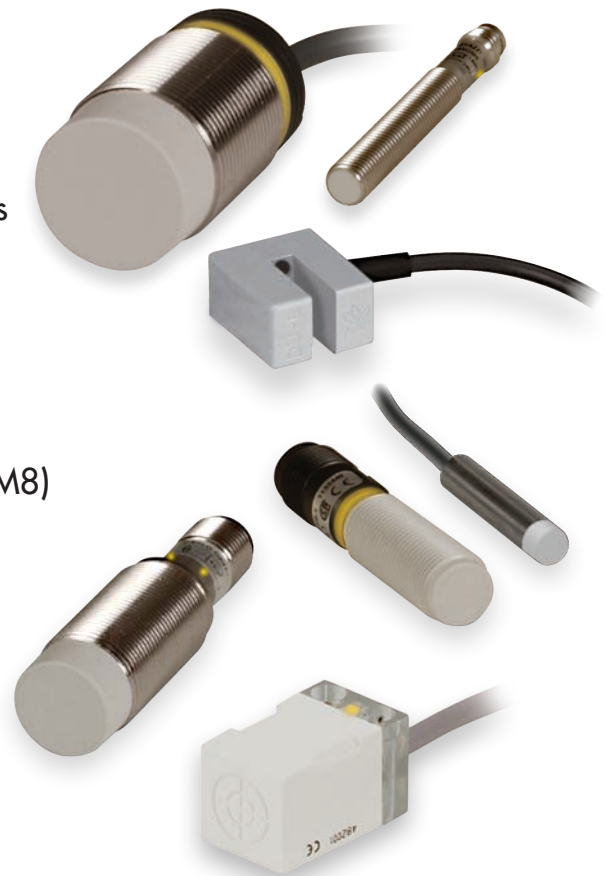
TRANSISTOR OR NAMUR, 2 WIRE DC

- M8, M12, M18 and M30 sizes
- Extended sensing ranges up to 22mm
- Stainless steel, nickel-plated brass, and aluminum housings
- Flush or non-flush types
- Normally open or normally closed outputs
- Form-fit-function replacement for miniature limit switches
- 10 – 40 VDC supply (10 – 30 VDC for M8)
- Reverse polarity, short-circuit and transient protection
- Cable or M12 plug connection
- Ideal for replacing mechanical switches



TRANSISTOR, 3 WIRE DC

- M5, Ø6.5, M8, M12, M18 and M30 sizes
- Rectangular housings
- Fork housings
- Extended sensing ranges up to 22mm
- Stainless steel, nickel-plated brass and plastic housings
- Flush or non-flush types
- NPN or PNP transistor
- Normally open or normally closed outputs
- Analog output versions available
- High temperature versions available
- 10 – 40 VDC supply (10 – 30 VDC for M5, Ø6.5, & M8)
- Reverse polarity, short-circuit and transient protection
- Cable connection
- M8 or M12 plug connection
- Ideal for general purpose applications



TRANSISTOR, 4 WIRE DC

- Rectangular and flat-pack housings
- Extended sensing ranges up to 30mm
- Nickel-plated brass and plastic housings
- Flush or non-flush types
- NPN or PNP transistor
- Normally open and closed outputs in a single sensor
- 10 – 30 VDC supply
- Reverse polarity and short-circuit protection
- Cable, M12 plug or terminal connection
- Ideal for replacing traditional limit switches



SCR OR MOSFET, 2 WIRE AC

- M12, M18, and M30 housings
- Rectangular housings
- Extended sensing ranges up to 30mm
- Stainless steel and plastic housings
- Flush or non-flush types
- Short circuit and transient protection
- Output current rating up to 500 mA
- SCR or MOSFET output
- Normally open or normally closed switching
- Cable, M12 plug or terminal connection
- Ideal for replacing traditional limit switches



Inductive Proximity Sensor Selection Guide

2 WIRE AC

Type Number	Sensing Distance (mm)	Mounting Flush or Non-Flush	Dimensions	Housing Material	Connection
EI1202TBxSL..	2	Flush	M12 x 50 mm	Stainless Steel	Cable or Plug (M12)
EI1204TBxSL..	4	Non-Flush	M12 x 54 mm	Stainless Steel	Cable or Plug (M12)
EI1805TBxSS..	5	Flush	M18 x 30 mm	Stainless Steel	Cable or Plug (M12)
EI1805TBxPS..	5	Flush	M18 x 30 mm	Thermoplastic-polyester	Cable or Plug (M12)
EI1805TBxSL..	5	Flush	M18 x 50mm	Stainless Steel	Cable or Plug (M12)
EI1805TBxPL..	5	Flush	M18 x 50mm	Thermoplastic-polyester	Cable or Plug (M12)
EI1808TBxSS..	8	Non-Flush	M18 x 38 mm	Stainless Steel	Cable or Plug (M12)
EI1808TBxPS..	8	Non-Flush	M18 x 38 mm	Thermoplastic-polyester	Cable or Plug (M12)
EI1808TBxSL..	8	Non-Flush	M18 x 58mm	Stainless Steel	Cable or Plug (M12)
EI1808TBxPL..	8	Non-Flush	M18 x 58mm	Thermoplastic-polyester	Cable or Plug (M12)
EI3010TBxSS..	10	Flush	M30 x 30 mm	Stainless Steel	Cable or Plug (M12)
EI3010TBxPS..	10	Flush	M30 x 30 mm	Thermoplastic-polyester	Cable or Plug (M12)
EI3010TBxSL..	10	Flush	M30 x 50 mm	Stainless Steel	Cable or Plug (M12)
EI3010TBxPL..	10	Flush	M30 x 50 mm	Thermoplastic-polyester	Cable or Plug (M12)
EI3015TBxSS..	15	Non-Flush	M30 x 30 mm	Stainless Steel	Cable or Plug (M12)
EI3015TBxPS..	15	Non-Flush	M30 x 30 mm	Thermoplastic-polyester	Cable or Plug (M12)
EI3015TBxSL..	15	Non-Flush	M30 x 50 mm	Stainless Steel	Cable or Plug (M12)
EI3015TBxPL..	15	Non-Flush	M30 x 50 mm	Thermoplastic-polyester	Cable or Plug (M12)

2 WIRE DC

IA08BSF02Dx	2	Flush	M8 x 30 mm	Stainless Steel	Cable
IA08BSN04Dx	4	Non-Flush	M8 x 34 mm	Stainless Steel	Cable
IG12FSF04Dx	4	Flush	30 x 19 x 15 mm	Aluminum	Cable
IA12DSF04Dx	4	Flush	M12 x 49 mm	Nickel-plated Brass	Cable
IA12ASF04DxM1	4	Flush	M12 x 63 mm	Nickel-plated Brass	Plug (M12)
IA12DSN08Dx	8	Non-Flush	M12 x 53 mm	Nickel-plated Brass	Cable
IA12ASN08DxM1	8	Non-Flush	M12 x 67 mm	Nickel-plated Brass	Plug (M12)
IA18DSF08Dx	8	Flush	M18 x 42 mm	Nickel-plated Brass	Cable
IA18ASF08DxM1	8	Flush	M18 x 55 mm	Nickel-plated Brass	Plug (M12)
IA18DSN14Dx	14	Non-Flush	M18 x 50 mm	Nickel-plated Brass	Cable
IA18ASN14DxM1	14	Non-Flush	M18 x 63 mm	Nickel-plated Brass	Plug (M12)
IA30DSF15Dx	15	Flush	M30 x 44 mm	Nickel-plated Brass	Cable
IA30ASF15DxM1	15	Flush	M30 x 55 mm	Nickel-plated Brass	Plug (M12)
IA30DSN22Dx	22	Non-Flush	M30 x 56 mm	Nickel-plated Brass	Cable
IA30ASN22DxM1	22	Non-Flush	M30 x 67 mm	Nickel-plated Brass	Plug (M12)

3 WIRE DC

IA05BSF10zxP	1	Flush	M5 x 25 mm	Stainless Steel	Cable
IA05BSF10zxM5P	1	Flush	M5 x 40 mm	Stainless Steel	Plug (M8)
IA06BSF10zx	1	Flush	ø6.5 x 30 mm	Stainless Steel	Cable
IA06BSF10zxM5	1	Flush	ø6.5 x 45 mm	Stainless Steel	Plug (M8)
IA08BSF15zx	1.5	Flush	M8 x 30 mm	Stainless Steel	Cable
IA08BSF15zxM5	1.5	Flush	M8 x 45 mm	Stainless Steel	Plug (M8)
IA08BLF15zx	1.5	Flush	M8 x 45 mm	Stainless Steel	Cable
IA08BLF15zxM5	1.5	Flush	M8 x 60 mm	Stainless Steel	Plug (M8)
IA08BLF15zxM1	1.5	Flush	M8 x 69 mm	Stainless Steel	Plug (M12)
IA06BSN20zx	2	Non-Flush	ø6.5 x 30 mm	Stainless Steel	Cable
IA06BSN20zxM5	2	Non-Flush	ø6.5 x 45 mm	Stainless Steel	Plug (M8)
IA08BSF20zx	2	Flush	M8 x 30 mm	Stainless Steel	Cable
IA08BSF20zxM5	2	Flush	M8 x 45 mm	Stainless Steel	Plug (M8)
IA12DSF02zx	2	Flush	M12 x 41 mm	Nickel-plated Brass	Cable
IA12ASF02zxM1	2	Flush	M12 x 55.2 mm	Nickel-plated Brass	Plug (M12)
IA12DLF02zx	2	Flush	M12 x 61 mm	Nickel-plated Brass	Cable
IA12ALF02zxM1	2	Flush	M12 x 75.2 mm	Nickel-plated Brass	Plug (M12)

Note: **x** = **O** for Normally Open or **C** for Normally Closed **z** = **N** for NPN or **P** for PNP



Inductive Proximity Sensor Selection Guide



3 WIRE DC (CONTINUED)

Type Number	Sensing Distance (mm)	Mounting Flush or Non-Flush	Dimensions	Housing Material	Connection
EI1202zPxSS..	2	Flush	M12 x 30 mm	Stainless Steel	Cable or Plug (M12)
EI1202zPxPS..	2	Flush	M12 x 30 mm	Thermoplastic-polyester	Cable or Plug (M12)
EI1202zPxSL..	2	Flush	M12 x 50 mm	Stainless Steel	Cable or Plug (M12)
EI1202zPxPL..	2	Flush	M12 x 50 mm	Thermoplastic-polyester	Cable or Plug (M12)
IA08BSN25zx	2.5	Non-Flush	M8 x 30 mm	Stainless Steel	Cable
IA08BSN25zxM5	2.5	Non-Flush	M8 x 45 mm	Stainless Steel	Plug (M8)
IA08BLN25zx	2.5	Non-Flush	M8 x 45 mm	Stainless Steel	Cable
IA08BLN25zxM5	2.5	Non-Flush	M8 x 60 mm	Stainless Steel	Plug (M8)
IA08BLN25zxM1	2.5	Non-Flush	M8 x 69 mm	Stainless Steel	Plug (M12)
IA08BSN40zx	4	Non-Flush	M8 x 30 mm	Stainless Steel	Cable
IA08BSN40zxM5	4	Non-Flush	M8 x 45 mm	Stainless Steel	Plug (M8)
IA12DSF04zO	4	Flush	M12 x 30 mm	Nickel-plated Brass	Cable
IA12ASF04zOM1	4	Flush	M12 x 30 mm	Nickel-plated Brass	Plug (M12)
IA12DSN04zx	4	Non-Flush	M12 x 45 mm	Nickel-plated Brass	Cable
IA12ASN04zxM1	4	Non-Flush	M12 x 60 mm	Nickel-plated Brass	Plug (M12)
EI1204zPxSS..	4	Non-Flush	M12 x 34 mm	Stainless Steel	Cable or Plug (M12)
EI1204zPxPS..	4	Non-Flush	M12 x 34 mm	Thermoplastic-polyester	Cable or Plug (M12)
EI1204zPxSL..	4	Non-Flush	M12 x 54 mm	Stainless Steel	Cable or Plug (M12)
EI1204zPxPL..	4	Non-Flush	M12 x 54 mm	Thermoplastic-polyester	Cable or Plug (M12)
IA18DSF05zx	5	Flush	M18 x 41.6 mm	Nickel-plated Brass	Cable
IA18ASF05zxM1	5	Flush	M18 x 55 mm	Nickel-plated Brass	Plug (M12)
IA18DLF05zx	5	Flush	M18 x 61.6 mm	Nickel-plated Brass	Cable
IA18ALF05zxM1	5	Flush	M18 x 75 mm	Nickel-plated Brass	Plug (M12)
EI1805zPxSS..	5	Flush	M18 x 30 mm	Stainless Steel	Cable or Plug (M12)
EI1805zPxPS..	5	Flush	M18 x 30 mm	Thermoplastic-polyester	Cable or Plug (M12)
EI1805zPxSL..	5	Flush	M18 x 50 mm	Stainless Steel	Cable or Plug (M12)
EI1805zPxPL..	5	Flush	M18 x 50 mm	Thermoplastic-polyester	Cable or Plug (M12)
IA12DSN08zO	8	Non-Flush	M12 x 34 mm	Nickel-plated Brass	Cable
IA12ASN08zOM1	8	Non-Flush	M12 x 34 mm	Nickel-plated Brass	Plug (M12)
IA18DSF08zO	8	Flush	M18 x 30 mm	Nickel-plated Brass	Cable
IA18ASF08zOM1	8	Flush	M18 x 30 mm	Nickel-plated Brass	Plug (M12)
IA18DSN08zx	8	Non-Flush	M18 x 49.6 mm	Nickel-plated Brass	Cable
IA18ASN08zOM1	8	Non-Flush	M18 x 63 mm	Nickel-plated Brass	Plug (M12)
EI1808zPxSS..	8	Non-Flush	M18 x 38 mm	Stainless Steel	Cable or Plug (M12)
EI1808zPxPS..	8	Non-Flush	M18 x 38 mm	Thermoplastic-polyester	Cable or Plug (M12)
EI1808zPxSL..	8	Non-Flush	M18 x 58 mm	Stainless Steel	Cable or Plug (M12)
EI1808zPxPL..	8	Non-Flush	M18 x 58 mm	Thermoplastic-polyester	Cable or Plug (M12)
IA30DSF10zx	10	Flush	M30 x 30 mm	Nickel-plated Brass	Cable
IA30ASF10zxM1	10	Flush	M30 x 30 mm	Nickel-plated Brass	Plug (M12)
IA30DLF10zx	10	Flush	M30 x 50 mm	Nickel-plated Brass	Cable
IA30ALF10zxM1	10	Flush	M30 x 50 mm	Nickel-plated Brass	Plug (M12)
EI3010zPxSS..	10	Flush	M30 x 30 mm	Stainless Steel	Cable or Plug (M12)
EI3010zPxPS..	10	Flush	M30 x 30 mm	Thermoplastic-polyester	Cable or Plug (M12)
EI3010zPxSL..	10	Flush	M30 x 50 mm	Stainless Steel	Cable or Plug (M12)
EI3010zPxPL..	10	Flush	M30 x 50 mm	Thermoplastic-polyester	Cable or Plug (M12)
IA18DSN14zO	14	Non-Flush	M18 x 38 mm	Nickel-plated Brass	Cable
IA18ASN14zOM1	14	Non-Flush	M18 x 38 mm	Nickel-plated Brass	Plug (M12)
IA30DSF15zO	15	Flush	M30 x 30 mm	Nickel-plated Brass	Cable
IA30ASF15zOM1	15	Flush	M30 x 30 mm	Nickel-plated Brass	Plug (M12)
IA30DSN15zx	15	Non-Flush	M30 x 42 mm	Nickel-plated Brass	Cable
IA30ASN15zxM1	15	Non-Flush	M30 x 42 mm	Nickel-plated Brass	Plug (M12)
EI3015zPxSS..	15	Non-Flush	M30 x 42 mm	Stainless Steel	Cable or Plug (M12)
EI3015zPxPS..	15	Non-Flush	M30 x 42 mm	Thermoplastic-polyester	Cable or Plug (M12)
EI3015zPxSL..	15	Non-Flush	M30 x 62 mm	Stainless Steel	Cable or Plug (M12)
EI3015zPxPL..	15	Non-Flush	M30 x 62 mm	Thermoplastic-polyester	Cable or Plug (M12)
IA30DSN22zO	22	Non-Flush	M30 x 42 mm	Nickel-plated Brass	Cable
IA30ASN22zOM1	22	Non-Flush	M30 x 42 mm	Nickel-plated Brass	Plug (M12)

Note: **x** = **O** for Normally Open or **C** for Normally Closed **z** = **N** for NPN or **P** for PNP



Inductive Proximity Sensor Selection Guide

HIGH TEMPERATURE

Type Number	Sensing Distance (mm)	Mounting Flush or Non-Flush	Dimensions	Housing Material	Connection
IA05BSF08xOHT-K	0.8	Flush	M5 x 30 mm	Stainless Steel	Cable
IA08BSF10xOHT-K	1	Flush	M8 x 45 mm	Stainless Steel	Cable
IA12ASF02POHT-K	2	Flush	M12 x 40 mm	Nickel-plated Brass	Cable
IA12ASF02POM1HT-K	2	Flush	M12 x 40 mm	Nickel-plated Brass	Plug (M12)
IA12ASF04POHT-K	4	Non-Flush	M12 x 40 mm	Nickel-plated Brass	Cable
IA12ASF04POM1HT-K	4	Non-Flush	M12 x 40 mm	Nickel-plated Brass	Plug (M12)
IA18ASF05POHT-K	5	Flush	M18 x 40 mm	Nickel-plated Brass	Cable
IA18ASF05POM1HT-K	5	Flush	M18 x 40 mm	Nickel-plated Brass	Plug (M12)
IA18ASN08POHT-K	8	Non-Flush	M18 x 40 mm	Nickel-plated Brass	Cable
IA18ASN08POM1HT-K	8	Non-Flush	M18 x 40 mm	Nickel-plated Brass	Plug (M12)
IA30ASF10POHT-K	10	Flush	M30 x 40 mm	Nickel-plated Brass	Cable
IA30ASF10POM1HT-K	10	Flush	M30 x 40 mm	Nickel-plated Brass	Plug (M12)
IA30ASN15POHT-K	15	Non-Flush	M30 x 40 mm	Nickel-plated Brass	Cable
IA30ASN15POM1HT-K	15	Non-Flush	M30 x 40 mm	Nickel-plated Brass	Plug (M12)

RECTANGULAR, FLAT PACK AND SLOTTED

IC08ANC15zO-K	1.5	Flush	40 x 8 x 8 mm	Nickel-plated Brass	Cable
IC08ANC15zOM5-K	1.5	Flush	40 x 8 x 8 mm	Nickel-plated Brass	Plug (M8)
ID25CNC20zO-K	2	Flush	40 x 26 x 12 mm	Thermplastic-polyester	Cable
ID25CNC20zOM5-K	2	Flush	40 x 26 x 12 mm	Thermplastic-polyester	Plug (M8)
DU3.5	3.5	Slotted	10 x 10 x 0.5 mm	Blue ABS	Cable
IC17CNC04zx-K	4	Non-Flush	28.5 x 17 x 17.5 mm	Thermplastic-polyester	Cable
IC25ANC05zx-K	5	Flush	50 x 25 x 10 mm	Nickel-plated Brass	Cable
DU5	5	Slotted	10 x 10 x 0.5 mm	Blue ABS	Cable
ID40CNC06AF-K	0-6	Non-Flush	40 x 50 x 12 mm	Polypropylene	Cable
DU6	6	Slotted	16 x 16 x 1 mm	Blue ABS	Cable
EI5510zPAP.	10	Flush/Non-flush	55 x 35 x 15 mm	Polycarbonate	Cable or Plug (M12)
DU10.	10	Slotted	16 x 20 x 1 mm	Blue ABS	Cable
EI5515zPAP.	15	Flush/Non-flush	55 x 35 x 15 mm	Polycarbonate	Cable or Plug (M12)
IC40CNN30zxT1	25	Non-Flush	118 x 40 x 40 mm	Thermplastic-polyester	Terminal

ANALOG OUTPUT

Type Number	Sensing Distance (mm)	Mounting Flush or Non-Flush	Dimensions	Housing Material	Output
IA08ALC15AG-K	0.1 - 1.5	Flush	M8 x 45 mm	Nickel-plated Brass	20 - 4 mA
IA12ALC03AG-K	0.1 - 3	Flush	M12 x 50 mm	Nickel-plated Brass	20 - 4 mA
IA12ALC03AK-K	0.3 - 3	Flush	M12 x 50 mm	Nickel-plated Brass	1 - 10 V
IA12ASC05AK-K	0.3 - 5	Flush	M12 x 50 mm	Nickel-plated Brass	0.5 - 10 V
IA18ALC05AH-K	0.1 - 5	Non-Flush	M18 x 80 mm	Nickel-plated Brass	0 - 1.6 V
EI1805I020	2 - 5	Flush	M18 x 71 mm	Nickel-plated Brass	0 - 20 mA
ID40CNC06AF-K	0 - 6	Non-Flush	40 X 50 X 12 mm	Polypropylene	0.6 - 15.5 mA
IA18ALC06AG-K	0.1 - 6	Flush	M18 x 55 mm	Nickel-plated Brass	20 - 4 mA
EI3008I020	3 - 8	Flush	M30 x 67 mm	Nickel-plated Brass	0 - 20 mA
IA30ALC10AG-K	0.5 - 10	Flush	M30 x 55 mm	Nickel-plated Brass	20 - 4 mA
IA30ASC11AK-K	3.5 - 11	Non-Flush	M30 x 55 mm	Nickel-plated Brass	0 - 10 V

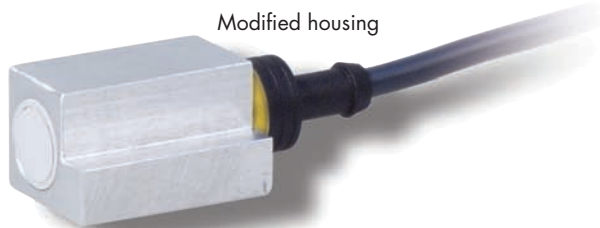
Note: **x** = **O** for Normally Open or **C** for Normally Closed **z** = **N** for NPN or **P** for PNP

Your Sensor – Your Way



Carlo Gavazzi is committed to providing the right solution to our OEM customers and their demanding application requirements. Sometimes this means that an *off-the-shelf* sensor isn't quite the *perfect* fit. We will customize proximity sensors to meet these specific demands for nearly any application. These customizations include, *but are not limited to*:

- Special cables
- Special connectors
- Modified housings
- Custom labels or markings
- All of the above, and more!



Other Sensors



The 3rd generation of the patented, industry leading **TRIPLESHIELD™ capacitive sensors** now feature push-button teach mode. Learn more by visiting:

www.GavazziOnline.com/capacitive_sensors.htm



The UA Series **ultrasonic sensors** are designed for both distance measurement and object detection in tough environments.

www.GavazziOnline.com/ultrasonic_sensors.htm



A large range of **photoelectric sensors** available in diffuse reflective, background suppression, retro-reflective, polarized, through beam, clear object detection, and color recognition.

www.GavazziOnline.com/photoelectric_sensors.htm



A comprehensive range of **level detection products** are well suited to solve most level control applications. Technologies include conductive probes and amplifiers, capacitive level sensors, ultrasonic sensors, magnetic level probes, and optical sensors.

www.GavazziOnline.com/level_sensors.htm



A comprehensive range of **magnetic sensors** for use in proximity detection applications. Available in a wide variety of housing styles, including rectangular, cylindrical, and slotted types.

www.GavazziOnline.com/magnetic_sensors.htm



A complete range of **limit switches** is offered. All of the most common sizes, shapes, and actuators are available, to solve any mechanical switch application.

www.GavazziOnline.com/limit_switches.htm



A high quality **radar sensor** that can be used for trouble-free control of all types automatic doors, including sliding, swinging, folding, revolving, high-speed, and overhead types.

www.GavazziOnline.com/pdf/RadarBrochure.pdf



Carlo Gavazzi offers a full range of **safety devices**, including light curtains, safety mats, safety switches, safety magnetic sensors, and safety control modules.

www.GavazziOnline.com/Safety



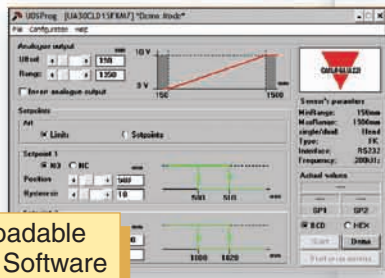
www.GavazziOnline.com

www.GavazziOnline.com is an information laden website which offers you the ability to download data sheets, specify products, check pricing and availability, track shipping and so much more:



Download Brochures

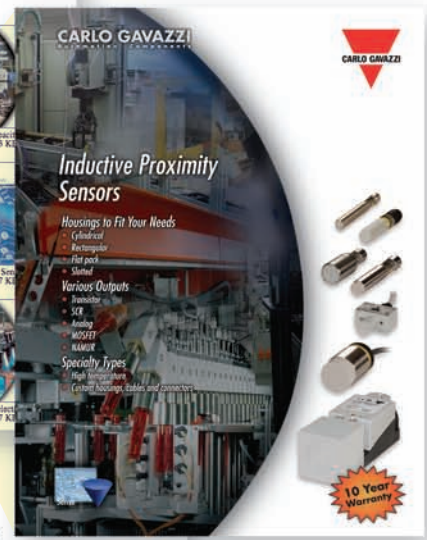
Easy-to-use Product Selection Guides



Free Downloadable Programming Software



CAD Drawings



Trade Show Schedule



User Manuals

User Manual
Bedienungsanleitung
Manuel de l'utilisateur
Manual del usuario
Manuale d'istruzione
Brugerhåndbog

Proximity Sensors Inductive Extended Range, Nickel-Plated Brass Housing Types IA, M12, M18 and M30

Product Description

- Housing distance: 4 to 22 mm
- Small and short body
- Long and short body
- Output: DC 300 mA, NPN or PNP
- Make switching function
- LED indicator
- Protection: reverse polarity, short circuit, temperature
- Cable and plug versions

Ordering Key IA12AS04N0M1

Model	Connection	Body diameter	Rated operating distance %	Ordering no. NPN	Ordering no. PNP
IA12	Circle	12 mm	4 mm	IA 12 DDP 04 N0	IA 12 DDP 04 P0
IA12	Circle	12 mm	10 mm	IA 12 DDP 10 N0	IA 12 DDP 10 P0
IA12	Circle	12 mm	15 mm	IA 12 DDP 15 N0	IA 12 DDP 15 P0
IA12	Circle	12 mm	20 mm	IA 12 DDP 20 N0	IA 12 DDP 20 P0
IA18	Circle	18 mm	4 mm	IA 18 DDP 04 N0	IA 18 DDP 04 P0
IA18	Circle	18 mm	10 mm	IA 18 DDP 10 N0	IA 18 DDP 10 P0
IA18	Circle	18 mm	15 mm	IA 18 DDP 15 N0	IA 18 DDP 15 P0
IA18	Circle	18 mm	20 mm	IA 18 DDP 20 N0	IA 18 DDP 20 P0
IA30	Circle	30 mm	4 mm	IA 30 DDP 04 N0	IA 30 DDP 04 P0
IA30	Circle	30 mm	10 mm	IA 30 DDP 10 N0	IA 30 DDP 10 P0
IA30	Circle	30 mm	15 mm	IA 30 DDP 15 N0	IA 30 DDP 15 P0
IA30	Circle	30 mm	20 mm	IA 30 DDP 20 N0	IA 30 DDP 20 P0

Specifications

Rated operational voltage	Rated current	Response time	Protection	Maximum polarity
12-24 VDC	300 mA	1 ms	IP67	IP67
12-24 VDC	300 mA	1 ms	IP67	IP67
12-24 VDC	300 mA	1 ms	IP67	IP67
12-24 VDC	300 mA	1 ms	IP67	IP67

Data Sheets

The Complete Product Package



Sense

Inductive Proximity Sensors
 Tripleshield™ Capacitive Sensors
 Photoelectric Sensors
 Inductive Loop Detectors
 Ultrasonic Sensors
 Radar Sensors
 Level Sensors
 Limit Switches
 Magnetic Switches



Switch

Solid State Relays
 Contactors and Overloads
 Manual Motor Starters
 Motor Controllers
 Variable Frequency Drives
 Electromechanical Relays
 Pilot Devices
 Cam Switches
 Rotary Disconnects



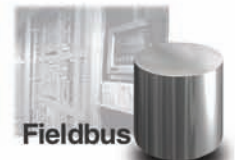
Control

Energy Management
 Digital Panel Meters
 PID Controllers
 Switching Power Supplies
 Time Delay Relays
 Current Monitoring Relays
 Voltage Monitoring Relays
 Three Phase Monitoring Relays
 Current Transformers



Safety

Control Modules
 Interlock Switches
 Magnetic Sensors
 Light Curtains
 Stack Lights
 Mat Systems



Fieldbus

Dupline Field & Installation Bus
 Building Automation Systems
 Elevator Systems

A Global Force in Industrial Automation

CARLO GAVAZZI has a multitude of sales offices spanning North America (*not to mention our hundreds of distributors*). Therefore, we can be viewed as "your local automation resource" - assisting you every step of the way in finding the proper solution for your various application requirements. Naturally, our job is greatly simplified as we have such a vast range of solutions to offer you via our comprehensive *product package*.

Our worldwide sales offices make us an ideal business partner, *especially for manufacturers of exported machinery*, as our products are available locally and they are CE marked.

USA
CARLO GAVAZZI INC.
 750 Hastings Lane
 Buffalo Grove, IL 60089
 Tel 847.465.6100
 Fax 847.465.7373
Sales@CarloGavazzi.com

CANADA
CARLO GAVAZZI (CANADA) INC.
 2660 Meadowvale Boulevard
 Mississauga, Ontario L5N 6M6
 Tel 905.542.0979, Fax 905.542.2248
CARLO GAVAZZI (CANADA) LTÉE
 3777 Boulevard du Tricentenaire
 Montréal, Quebec H1B 5W3
 Tel 514.644.2544, Fax 514.644.2808
Gavazzi@CarloGavazzi.com

• Regional / Area Sales Office
 • District Sales Office

Argentina • Australia • Austria • Bahrain • Belgium • Bolivia • Bosnia • Brazil • Brunei • Bulgaria • Canada
 Chile • China • Columbia • Croatia • Cyprus • Czech • Denmark • Dominican Republic • Egypt • Estonia
 Finland • France • Germany • Greece • Hungary • Hong Kong • Iceland • India • Indonesia • Iran • Ireland
 Italy • Japan • Jordan • Kenya • Korea • Kuwait • Lebanon • Malaysia • Malta • Maroc • Mauritius • Mexico
 Netherlands • New Zealand • Norway • Pakistan • Papua New Guinea • Paraguay • Peru • Philippines
 Poland • Portugal • Qatar • Romania • Russia • Saudi Arabia • Serbia • Singapore • Slovakia • Slovenia
 South Africa • Spain • Sultanate of Oman • Sweden • Switzerland • Taiwan • Thailand • Tunisie • Turkey
 Ukraine • United Arab Emirates • United Kingdom • Uruguay • United States of America • Venezuela • Vietnam

Inductive Proximity Sensor Brochure 8/08

Your Authorized Distributor:

CARLO GAVAZZI
 Automation Components

USA Phone: 847.465.6100 Fax: 800.222.2659

Canada Ontario: 905.542.0979 Quebec: 514.644.2544

Website www.GavazziOnline.com

Email Sales@CarloGavazzi.com



Visit our website for downloadable data sheets,
 brochures & pricing: www.GavazziOnline.com